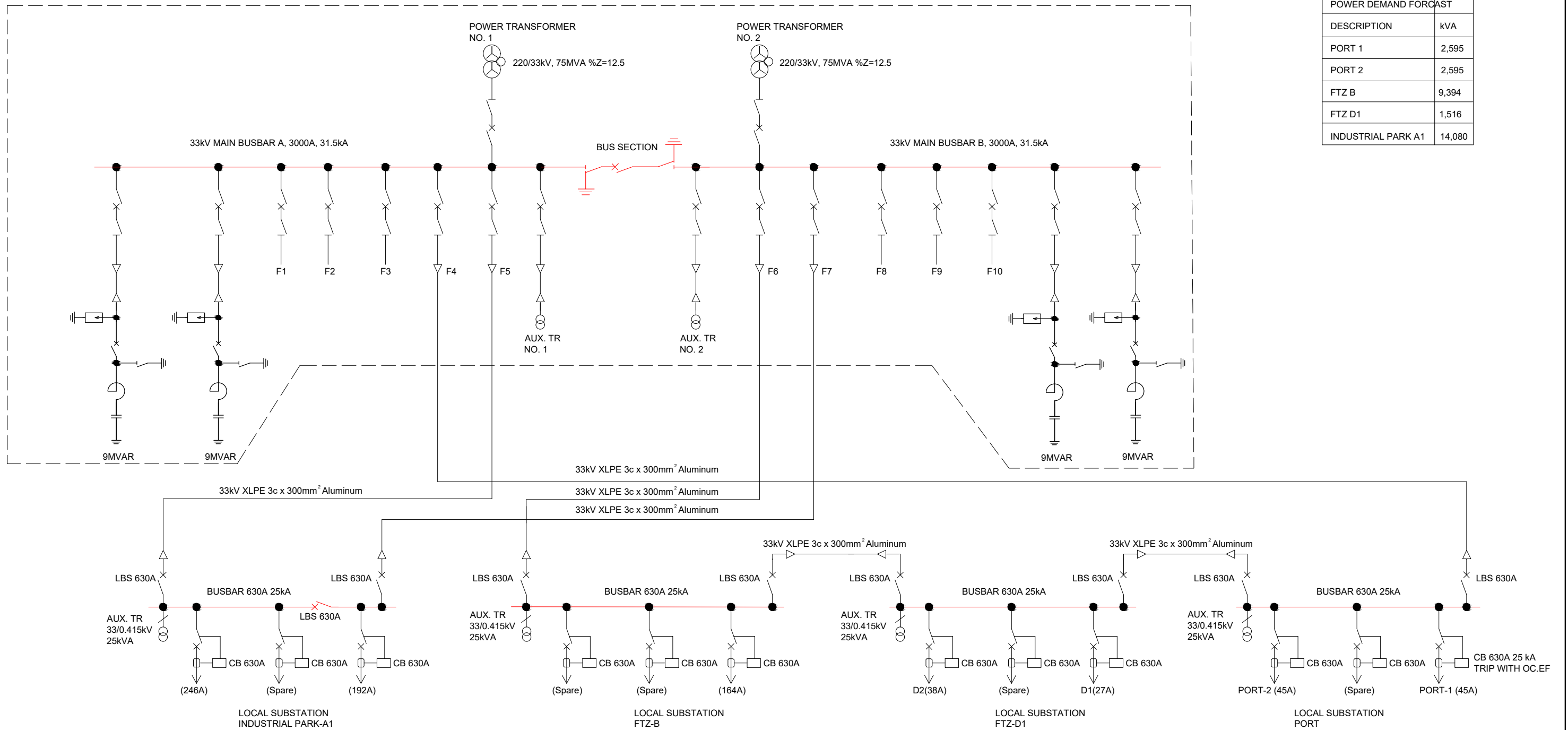


DONGO KUNDU 220/33kV SUBSTATION

POWER DEMAND FORECAST	
DESCRIPTION	kVA
PORT 1	2,595
PORT 2	2,595
FTZ B	9,394
FTZ D1	1,516
INDUSTRIAL PARK A1	14,080



33kV Distribution System

**DRAWING INDICATIVE FOR BIDDING PURPOSE ONLY**

	KENYA ELECTRICITY TRANSMISSION COMPANY LIMITED (KETRACO) REPUBLIC OF KENYA
	JOINT VENTURE OF NIPPON KOEI, LTD NEW JEC INC
MOMBASA SPECIAL ECONOMIC ZONE DEVELOPMENT PROJECT ELECTRICITY SUB-PROJECT	
SEZ Substation-33kV Distribution System Electrical	
MARCH 2024	
MSEZ-2022-D/E-001	