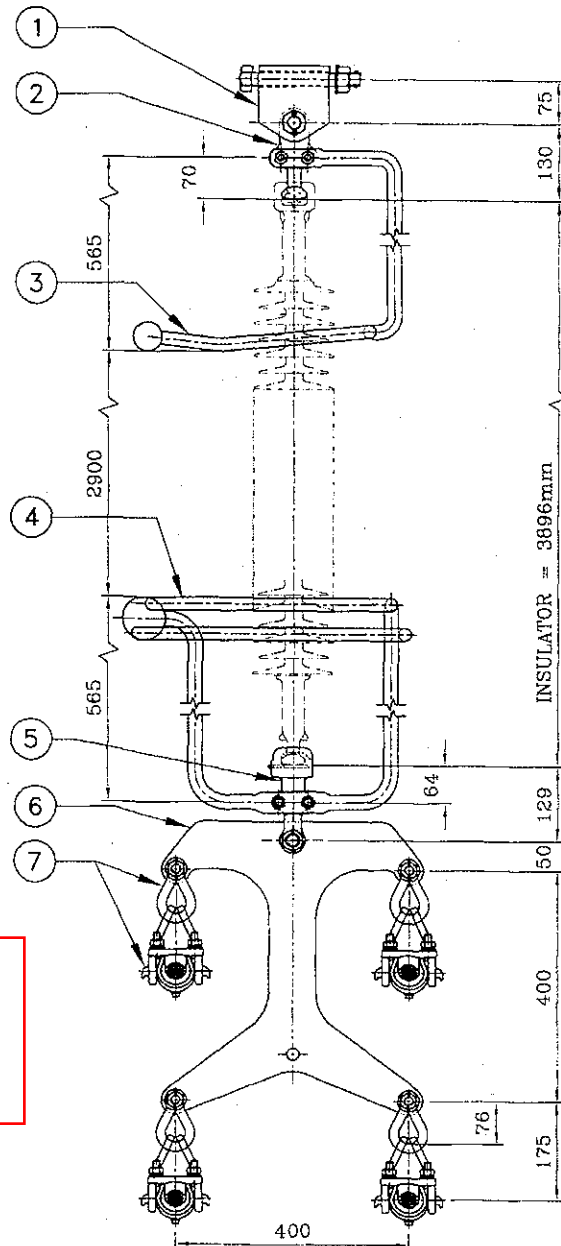


# \* TECHNICAL DATA \*

1. U.T.S. OF HARDWARE FITTINGS: 160 KN.
2. SLIP STRENGTH OF SUSPENSION CLAMP : 15 % UTS OF ACSR LARK.
3. BALL & SOCKET DESIGNATION : 20 mm. AS PER IEC:120.
4. H/WARE FITTINGS CONFORMS TO B.S.: 3288, PART-1.
5. ALL FERROUS PARTS (EXCEPT SPRING WASHER) SHALL BE HOT DIP GALVANISED CONFORMING TO B.S: 729.
6. SPRING WASHER : SPRING STEEL, ELECTRO-GALVANISED.
7. SPLIT PIN & SECURITY CLIP: STAINLESS STEEL.
8. SHORT CIRCUIT CAPACITY : 31.5 KA FOR 1 SEC.
9. MIN. CORONA EXTINCTION VOLTAGE - 290 KV.
10. RIV AT 275 KV.45 dB.
11. GENERAL TOLERANCE : ±3%.



182AKPSI0012B

## COMPONENT DETAILS

SL. NO.	ITEM DESCRIPTION	DRG./CAT. NO.	MATERIAL	FINISH	U.T.S. (KN)	REQD. QTY.
1	TOWER HINGE	ATEL-3B/2	MILD STEEL FE-410	H.D.G.	160	1
2	H.H. BALL EYE	ABL-8	FORGED STEEL(CL.-IV)	H.D.G.	160	1
3	ARCING RING(T.S)	AAH/FRB-13H	MILD STEEL FE-410	H.D.G.	-	1
4	ARCING RING(L.S)	AAH/FRB-14G	MILD STEEL FE-410	H.D.G.	-	1
5	H.H.SOCKET CLEVIS	ASC-8H/1	FORGED STEEL(CL.-IV)	H.D.G.	160	1
6	YOKE PLATE	AYP-176	MILD STEEL FE-410	H.D.G.	160	1
7	SUSPENSION CLAMP ASSY. WITH P.A. ROD	A-30-ASSY	FORGED STEEL(CL.-IV) & AL. ALLOY	H.D.G.	70	4SETS

CONTROLLED COPY

DD\GK\DRG.-07\EXP\KENYA\O\MOMBASA-NAIROBI\400KV\STRING LATEST\REV--09\ASS-556

REV.	DATE	DESCRIPTION	DRAWN BY	CHD. BY	APPR. BY
8.	31.01.11	REVISED AS PER COMMENTS	A.M.		
7.	10.01.11	REVISED AS PER COMMENTS	A.S.		
6.	31.12.10	REVISED AS PER COMMENTS	A.S.		
5.	27.11.10	REVISED AS PER COMMENTS	A.S.		
4.	25.10.10	CHANGED AS PER COMMENTS	A.S.		
3.	13.10.10	INSULATOR CHANGED	A.S.		
2.	06.09.10	CHANGED AS PER DESIGN	A.M.		
1.	03.07.10	SUS. CLAMP CHANGED	A.S.		

ITEM :

400 KV. SINGLE SUSPENSION H/WARE FITTINGS SUITABLE FOR ACSR QUAD LARK CONDUCTOR.

DRG.NO. : ASS-556

DRAWN BY	DESIGNED BY	CHECKED BY	APPROVED BY	SCALE	DATE	PAGE NO.
A.Shaw	S.Das			N.T.S.	15.12.08	1